

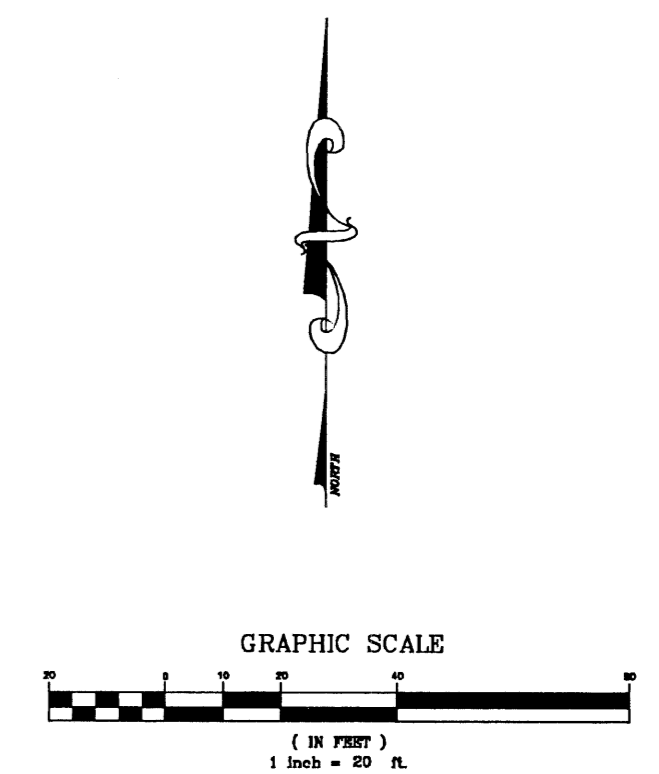
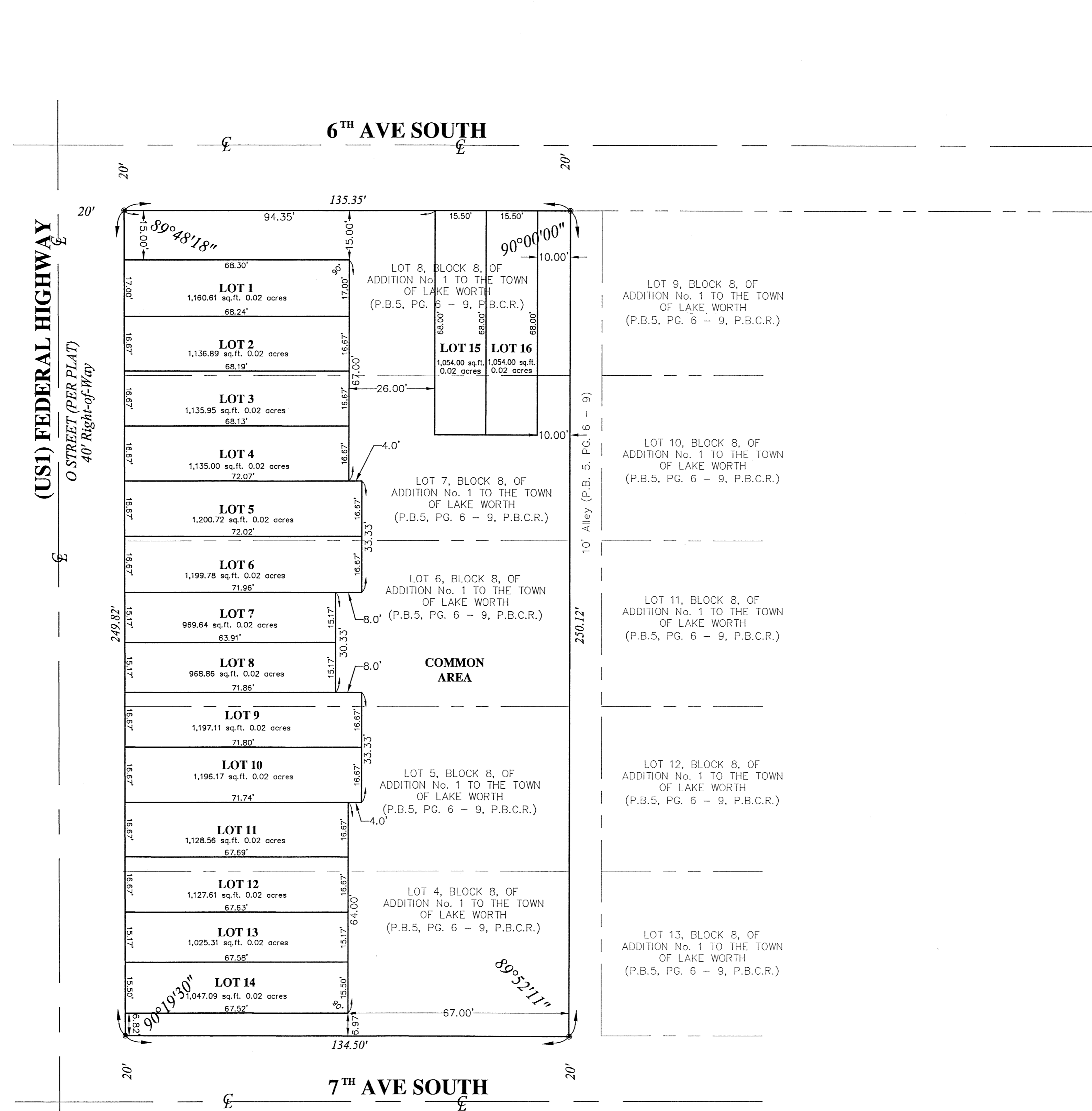
STATE OF FLORIDA
 COUNTY OF PALM BEACH
 THIS PLAT WAS FILED FOR
 RECORD AT
 THIS DAY OF
 200 , AND DULY RECORDED
 IN PLAT BOOK ON PAGE
 DOROTHY H. WILKEN, CLERK
 BY: _____DC

PINEAPPLE VILLAGE No. 1

A REPLAT OF LOTS 4, 5, 6, 7, AND 8 OF BLOCK 8, OF THE PLAT ENTITLED
 "ADDITION No. 1 TO THE TOWN OF LAKE WORTH", (PLAT BOOK 5, PAGES
 6-9, PALM BEACH COUNTY RECORDS), LYING IN SECTION 27, TOWNSHIP 44
 SOUTH, RANGE 43 EAST, PALM BEACH COUNTY, FLORIDA.

APRIL, 2003

SHEET 2 of 2



- ABBREVIATION LEGEND:
- 01. DENOTES SET PERMANENT REFERENCE MONUMENT (P.R.M.) #LB6851 (UNLESS OTHERWISE INDICATED)
 - 02. DENOTES CENTERLINE
 - 03. PG. DENOTES PAGE
 - 04. P.B. DENOTES PLAT BOOK
 - 05. P.B.C.R. DENOTES PALM BEACH COUNTY RECORDS

BATTAGLIA LAND SURVEYORS, INC.
 1692 NW MADRID WAY, BOCA RATON, FLORIDA 33432
 OFFICE (561) 750-8108 FAX (561) 750-8110

SCALE: 1"=20'	DRAWN BY: J.J.L.
DATE: APRIL, 2003	CHECKED BY: R.G.B.
SITUATE IN SECTION 27, TOWNSHIP 44 SOUTH, RANGE 43 EAST LAKE WORTH, FLORIDA	
DRAWING NUMBER: 102-149	